



Flowers Online



Easy & Profitable



Share



Track





S1



S2



HOLLAND PRIDE \$22

25 BULBS

The most popular choice from our 4 color themed gardens last spring, our Holland Pride orange bouquet will look stunning against any backdrop. As with all four gardens this is a great value at \$22 for 25 bulbs. Contains the following:

1 Decorative Orange Dahlia

Zone 8-10 Size No. 1
Height 36-48" Spacing 18-24"
Full Sun Cut Flower

4 Peter Pears Gladiolus

Zone 8-10 Bulb size 10/12 cm
Height 36-48" Spacing 5-6"
Full Sun Cut Flower Deer Resistant

2 Orange Asiatic Lilies

Zone 3-9 Bulb size 12/14 cm
Height 30-36" Spacing 6-8"
Full or Part Sun Cut Flower

18 Orange Single Freesia

Zone 8-9 Bulb size 5/6 cm
Height 12-24" Spacing 4-6"
Full Sun Part Sun Fragrant

MAGIC MOON GARDEN \$22

25 BULBS

Moon gardens have increased in popularity over recent years. These flowers seem to glow at night under the light of the moon or backyard lighting. A wonderful addition to any yard, we've added this new item by popular demand.

Contains the following:

1 Decorative White Dahlia

Zone 8-10 Size No. 1
Height 36-48" Spacing 18-24"
Full Sun Cut Flower

4 White Gladiolus

Zone 8-10 Bulb Size 10/12 cm
Height 36-48" Spacing 5-6"
Full Sun Cut Flower Deer Resistant

2 White Asiatic Lilies

Zone 3-9 Bulb Size 12/14 cm
Height 30-36" Spacing 6-8"
Full or Part Sun Cut Flower

18 Iris Hollandica

Zone 4-9 Bulb Size 7/8 cm
Height 20-24" Spacing 4-6"
Full Sun Part Sun Cut Flower



S3



Perfectly color-themed Gardens

REALLY, REALLY RED \$22

25 BULBS

If red flowers light up your eyes this Really, Really Red Collection is the collection for you! The red flowers in this collection bloom at various times through summer creating a sea of red in your garden from June through September. The Red Ixia will bloom late spring, with the Red Asiatic blooming next in early summer. In mid-summer you will see blooms from the Traderhorn Gladiolus and Red Dahlias. The dahlias have a long bloom time, once they start blooming they don't stop until the first hard frost of the year.

Contains the following:

1 Decorative Red Dahlia

Zone 8-10 Size No. 1
Height 36-48" Spacing 18-24"
Full Sun Cut Flower

4 Traderhorn Gladiolus

Zone 8-10 Bulb Size 10/12 cm
Height 36-48" Spacing 5-6"
Full Sun Cut Flower Deer Resistant

2 Red Asiatic Lilies

Zone 3-9 Bulb Size 12/14 cm
Height 30-36" Spacing 6-8"
Full or Part Sun Cut Flower

18 Red Ixia

Zone 7-10 Bulb Size 5/6 cm
Height 12-18" Spacing 2-3"
Full Sun Cut Flower



ALL SEASONS GARDEN \$24

40 BULBS

The summer garden collection offers an exceptional mix of 4 beautiful plants that form a great variety of color and texture when planted in any flower garden. In combination, these plants give you color from early summer right through to the fall. The entire garden has been designed to grow best in a sunny location.

Contains the following:

10 Purple Liatris

Bulb size 6/8cm Height 28-31"
Spacing 6-8" Full or Part Sun Zone 5-9
Cut Flower Deer Resistant

10 Peacock Orchids

Bulb size 4/5 cm Height 10-18"
Spacing 6-8" Full or Part Sun Zone 7-10
Cut Flower Deer Resistant

10 Good Luck Plants

Bulb size 4/5 cm Height 6-10"
Spacing 4-6" Full Sun Zone 8-10
Part Sun

10 Queen Fabiloa

Bulb size 4/5cm Height 12-18"
Spacing 4' full sun Part Sun Zone 7-10
Cut Flower Deer Resistant

SUMMER OF COLOR \$26

65 BULBS

Featuring practically every imaginable color, our Summer of Color Garden provides you with 65 bulbs that will provide an explosion of color all summer long. These four varieties have been chosen to give the greatest contrast of height, color foliage and interest. Can be grown individually in pots or containers or can be mixed within a border for a spectacular display.

Contains the following:

20 Allium Molly

Bulb size 4/5cm Height 10-12"
Spacing 3-4" Full or Part Sun Zone 4-8
Cut Flower Deer Resistant

15 Ixias Mix

Bulb size 4/5 cm Height 12-18"
Spacing 2-3" Full Sun Zone 7-10
Cut Flower Deer Resistant

15 Fragrant Freesias

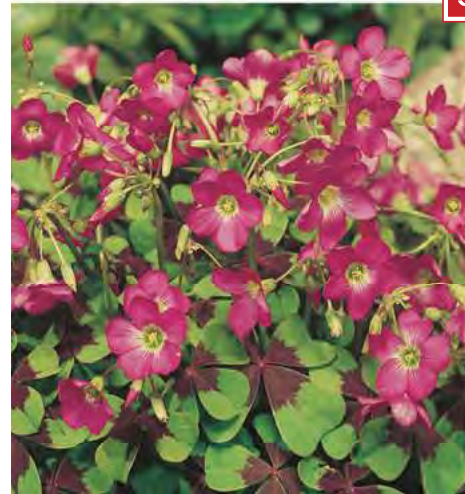
Bulb size 4/5cm Height 4-8"
Spacing 4" Full Sun Part Sun Zone 9-11
Cut Flower Deer Resistant Fragrant

15 Anemone Blanda

Bulb size 4/5cm Height 4-8"
Spacing 2" Full Sun Zone 5-8
Part Sun Deer Resistant



S4



S5



Vertical & Saddlebag Seed Gardens...



S6

HUMMINGBIRD VERTICAL GARDEN \$10

Vertical gardening is fast becoming a popular past time. Enjoy a profusion of color and blooms with the added bonus of being able to watch the fauna enjoy the nectar of the sweet flowers. Hummingbird mix includes a mix of gold, orange, purple, pink, yellow, and red flowers that attract hummingbirds. Includes a hanging bag with rope, special hummingbird attracting seed mix, complete planting and care instructions.



S7

BUTTERFLY SADDLEBAG GARDEN \$10

Enjoy a profusion of color and blooms with the added bonus of being able to watch the fauna enjoy the nectar of the sweet flowers. Butterflies love bright colors in gold, orange, blue, pink, yellow, and red flowers. Kit includes a saddlebag that drapes over any railing or fence, special butterfly attracting seed mix, complete planting and care instructions.

Everyone Loves our Seed Mats...



S8

HONEY BEE SEED MAT \$10

Give new life to your garden...and Honeybees too. Bee populations have been declining and you can be part of the solution with our special seed mixture. It's packed with flower varieties specially selected for their ability to attract bees. This makes the bees' work a little easier and reduces stress in their hives. Best of all, you'll be treated to a summer-long spectacle of brilliant color, delightful form and enticing fragrance – and, you'll have an armload of blooms for indoor enjoyment. Flower mat measures 17" x 5' long.



S9

BUTTERFLY GARDEN SEED MAT \$10

Our easy to plant Butterfly Garden Flower Mat will attract multitudes of butterflies with this colorful blend of cornflowers, cosmos, coreopsis, marigold, zinnia and more. Contains both annuals and perennials for quick and long-lasting color in summer. Plant in full sun or partial shade, they'll thrive in most types of soil, with little care. Mat measures 17" x 5' long and is filled with over 800 seeds.

Seed Mats are Easy & Fun to Plant...



SUNNY TREE RING

\$10

This sun-loving tree ring mix includes a profusion of colors in Pink, Orange, Rose, Mauve, Blue-Violet, Purple, White, Blue, Yellow and Red flowers blooming throughout the summer. Flowers range in height from 4 to 12 inches. Complete care instructions included. Flower mat measures 17" x 5' long.



SHADY ANNUAL TREE RING

\$10

Beautify the area surrounding your trees with this easy-to-plant seed mat ring. Simply loosen the soil around the base of your tree, lay the mat in position, lightly cover with soil and in just a few weeks you'll have a wonderful collection of shade loving flowers. As shown above, this dramatically improves the appearance of trees in your yard and helps maintain moisture for your tree.

SEED MATS: AS SIMPLE AS 1..2..3...

There's no easier way to either start a gardening hobby or to fill your yard with wonderful flowers than to plant our amazing seed mats. Always a very popular item in this catalog, gardeners across the country love how easy and maintenance free this planting method has become.

Simply plant in spring after the last danger of frost. Select an area that has at least 4-6 hours of sunlight and loosen the soil to a depth of between 3 and 4 inches in an area that's the same size as your seed mat. Carefully lay out the mat with the words "This Side Up." Cover the mat with no more than a 1/8th of an inch of soil. This will help hold the mat down and allow the seeds to easily germinate. Soak the mat entirely (being careful to use a fine spray) until the mat is saturated and appears to melt into the soil. Continue to keep the mat moist until your new plants are established (2-3" in height). CHECK DAILY that the top 1" is moist.

You don't need to leave your seed mat as one long border. You may cut it up into different shapes and spread it out. There is no wrong way...it's up to you. Each mat measures 17" wide by 5' in length.

Some flowers will bloom in poor soil, but most will benefit from some fertilizer. If your soil needs to be improved, use a low nitrogen fertilizer with a 5-10-10 ratio or add organic matter to your soil. Keep in mind, OVER fertilizing can promote weeds and lush foliage instead of flowers.



S12

HUMMINGBIRD GARDEN MIX

\$8

Everyone loves the amazing antics of the hummingbird and our new seed collection is just the answer to attracting them to your garden or window box. This special 10-gram seed mix will cover over 150 square feet and contains Cosmos Sensation Mix, Tall Mixed Cornflower, Indian Blanket, Tree Mallow, Lance Leaved Coreopsis, Shasta Daisy Alaska, Purple Coneflower, Globe Gilia, Annual Mix Phlox, Catchfly, Tall White Sweet Alyssum and Foxglove.



S13

SUNFLOWER COLLECTION

\$10

Our best-selling flower seed collection consists of a varied range of colors and sizes. Included are individual packages of Velvet Queen, Teddy Bear, Autumn Beauty, Giganteas, and Early Russian. Add some vivid beauty and golden smiles to your late summer garden. *5 packages of seeds*

Grow Your Own for the Freshest Taste!



S14

PERFECT SALAD GARDEN

\$10

Imagine sitting down to a delicious salad grown and cared for entirely by you! Containing the perfect combination of Tomatoes, Radish, Onions, Lettuce & Cucumbers, this collection of salad ingredients is sure to provide that fresh grown taste. Fresh from the garden to your table! *5 packages of seeds.*



S15

HEALTHY HERB GARDEN

\$10

Enjoy fresh grown herbs from your own backyard by planting together in one large container or in separate pots on your deck or patio. Contains Sweet Basil, Summer Savoury, Dill, Oregano, Parsley & Thyme. Can be grown indoors along your kitchen windowsill. *6 packages of seeds.*



S16

JUICY TOMATO GARDEN

\$10

It's hard to beat the taste of a fresh tomato just pulled from the vine! Included are individual packages of Beefsteak, Brandywine, Roma, Ace 55 and Large Red Cherry Tomatoes. Delicious and guaranteed to grow! *5 packages of seeds.*

Full planting instructions are contained on each package contained in these seed collections.

Every item in this catalog is guaranteed to meet with your approval upon delivery or we will replace it free of charge.



TWO TRAY SPROUTER

\$20

This new and improved sprouter design is simple to use and very durable. In a matter of only days you can grow fresh sprouts to add to your salad, sandwich or as a healthy garnish with any meal. Trays are made from strong, crack resistant BPA free plastic and this unique design uses water in the tray for all stages of growth. Comes with simple and complete growing instructions.

This is an extremely cost-effective way to grow these nutritious gems right in your kitchen! In general, sprouts supply the highest number of vitamins, minerals and enzymes of any food per unit of calorie. Containing an abundance of antioxidants & vitamins, broccoli and alfalfa sprouts add flavor and nutrition to every bite of your favorite dishes.

See our Alfalfa & Broccoli Sprouting seeds below.

Unit Contains:

- 2 Growing Trays
- 1 Water Collection Tray
- 1 Storage Lid
- Complete Instructions

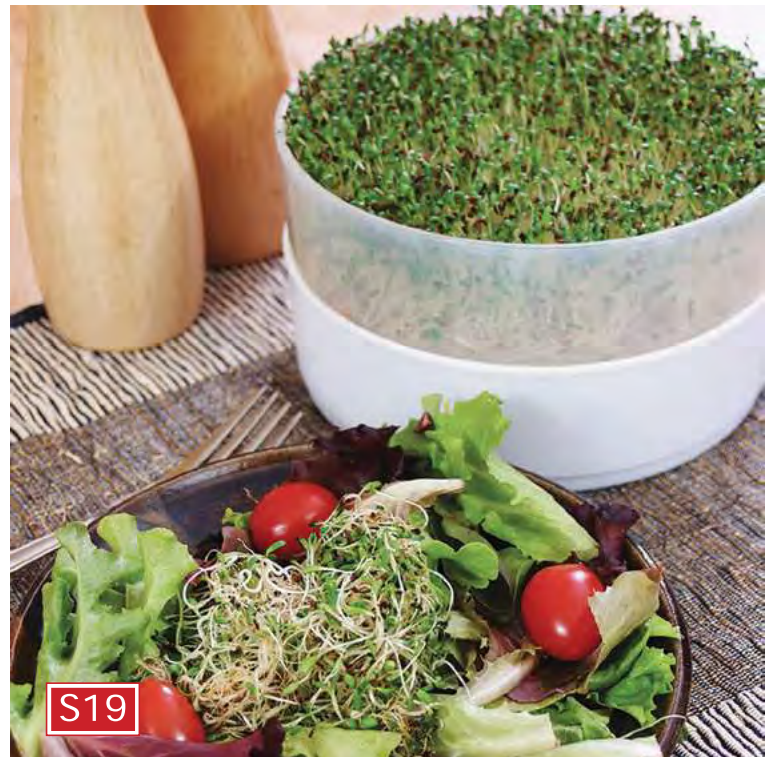
Sprouts...the Healthy Super Food



BROCCOLI SPROUTS

\$6

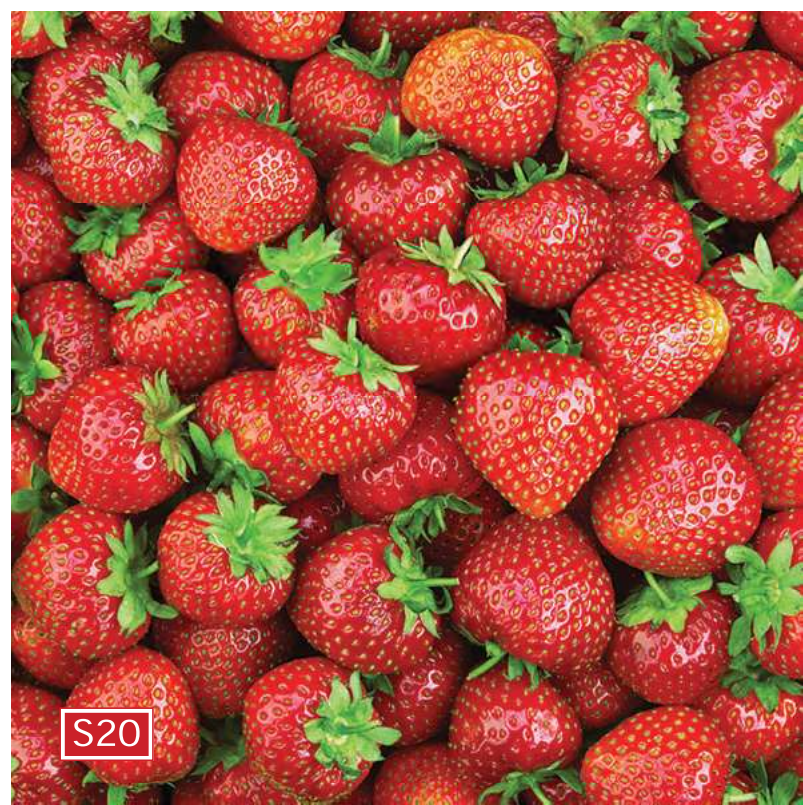
A healthy addition to any salad or sandwich all year long. Famous for its antioxidant content, broccoli sprouts can contain approximately 50 times the cancer fighting compound that's found in mature broccoli. Easy to grow and ready in just days.



ALFALFA SPROUTS

\$6

Tasty, crunchy sprouts add flavor & nutrition to every meal. Alfalfa sprouts have mild flavor, moderate crunch, plenty of nutrition and are very simple to grow. Famous as a tonic for the whole body, Alfalfa Sprouts are known to help build iron levels in blood.



S20

15 DELICIOUS STRAWBERRIES \$22

These plants will produce large, sweet strawberries that are ideal for making preserves, pie filling or eating fresh from the garden. Plant in groups for good pollination to ensure a great crop. Just imagine the taste of freshly picked strawberries from your own backyard!

Hardy in zones 4-8 Size No. 1 Height – Ground Cover Spacing 12” Full Sun



S21

10 WHITE STRAWBERRIES \$20

The pineberry is a white strawberry with red seeds. Pineberries are actually the oldest strawberry variety. The aroma and taste of pineberries never disappoints – the striking berries have a unique pineapple flavor. Only recently introduced to North America, be the first to dazzle your neighbors and friends!

Hardy in zones 3-8 Size No. 1 Height – Ground Cover Spacing 12” Full Sun





S22

10 MIXED HARDY DWARF GLADIOLUS \$12

Cheery mixture of starlike flowers in pink, purple, red and white open from upright spikes in summer. Their hardiness and vertical growth habit makes them well suited to perennial borders. They're also showy cut flowers. To extend bloom time, plant bulbs every 7-10 days. Exceptionally hardy and brilliant in bouquets.

Hardy in 7-9 Size 7/8 cm Height 24-32" Spacing 3-5" Full Sun Cut Flower



S23

3 STARGAZER LILIES \$12

An excellent choice for planting in borders or pots, Stargazer has long been a favorite with gardeners due to its spectacular coloring. Blooming a little later than other lilies, their fragrance permeates the outdoor air.

Hardy in zones 3-9 Bulb Size 12/14 cm Height 24-36"
Spacing 10-12" Full or Part Sun Fragrant

Our Best Sellers – Guaranteed to Please...



S24

1 BLEEDING HEARTS \$12

Bleeding Hearts form a bushy, upright mound of light green foliage that resembles leaves like a fern. It supports hundreds of bright pink and white dangling heart-shaped blooms. Considered one of the most unique flowers in nature.

Hardy in zones 2-8 Size 2-3 eyes Height 24-36" Spacing 18-24"
Part Sun/Shade Cut Flower Deer Resistant



S25

3 MIXED HOSTA \$14

An assortment of tried and tested hosta varieties that will provide a natural and effortless display of foliage and tall flowers to enhance the shadier areas of your bed or border. Always a customer favorite.

Hardy in zones 3-8 Size No. 1 Height 12-24"
Spacing 18-24" Part Sun or Shade



S26

2 AGAPANTHUS BLUE

\$18

Featuring an abundance of Periwinkle Blue flowers, this Agapanthus will attract hummingbirds and butterflies to your garden. A perfect container plant, it also works well along a tree line or border. Exceptionally vigorous and easy to grow, these lovely blue flowers will add a tropical look and feel to your garden.

Hardy in zones 8-10 Size No. 1 Height 24-36"

Spacing 4-6" Full or Part Sun Cut Flower Deer Resistant



S27

5 BLUE GLOBE THISTLE

\$14

The Blue Globe Thistle (also known as echinops), is one of the most eye-catching plants in nature. By midsummer it features a countless number of amazing globes of steel-blue flowers. Another great feature are the large, gray/green leaves that serve as a contrasting backdrop to these highly unique flowers.

Hardy in zones 3-8 Size No. 1 Height 36-48"

Spacing 18-24" Full or Part Sun Cut Flower Deer Resistant

Enjoy the Summertime Blues...



S28

15 ANEMONE MR. FOKKER

\$14

Everyone loves some true blue highlights in their garden. The rich super-blue blooms of the poppy anemone create saucer-shaped flowers atop wonderful feathery foliage. Mr. Fokker is a welcome contrast to the typical pinks and yellows of most gardens.

Hardy in zones 7-10 Bulb Size 4/5 cm Height 8-12"

Spacing 4" Full or Part Sun Cut Flower Deer Resistant



S29

3 BLUE HARDY GERANIUMS

\$18

Considered the best of all blue hardy geraniums! Finely cut leaves quickly form clumps and are the perfect backdrop for the flowers in late spring. In the fall, the foliage takes on brilliant orange and red tones extending this perennial's seasonal interest even further.

Hardy in zones 3-9 Size No. 1 Height 15-18"

Spacing 20-30" Full Sun Part Sun



S30

25 PINK FAIRY LILIES

\$16

Fairy Lilies, also known as Rain Lilies, is a species that originated in the Caribbean. Perfect for rock gardens or added to mixed border. Fairy Lilies are known for their habit of blooming several times a season, usually 3 or 4 days after it rains. Spectacular pink flowers abound from late summer into fall.

Hardy in zones 6-10 Bulb Size 6+ cm Height 6-12"

Spacing 6-9" Full or Part Sun Cut Flower Deer Resistant



S31

3 LILAC TIME DAHLIAS

\$14

Considered one of the most favorite of all Dinnerplate Dahlias, Lilac Time boasts enormous lilac purple blooms from mid-summer right through until frost. Pinch off the side buds to see just how large these flowers can get! As with all Dahlias, dig in fall and store tubers indoors over winter.

Hardy in zones 8-10 Size No. II Height 36-48"

Spacing 18-24" Full or Part Sun Cut Flower

Always Looking Pretty in Pink!



S32

4 ORIENTAL LILIES

\$12

Beautiful, large exotic flowers provide amazing color and fragrance. Best planted in groups of three or more in a mixed bed or border. Each bulb will produce more flowers every year and eventually produce additional stems as well. The perfect cut flower bouquet.

Hardy in zones 4-9 Bulb Size 12-14 cm Height 32-48"

Spacing 8-12" Full or Part Sun Cut Flower Fragrant



S33

3 MIXED ASTILBE

\$16

Masses of colorful, feathery plumes are ideal for the shade. A mix of pink, bright red, and white colors that will bring your shade bed a stunning look with both its attractive blooms and foliage. The fern-like leaves keep their form throughout the entire season.

Hardy in zones 3-9 Size 2-3 eyes Height 12-20"

Spacing 18-24" Part Sun or Shade Cut Flower Deer Resistant



S34

3 MIXED CONEFLOWERS

\$14

Praised for their large, daisy-like flowers which appear from mid through late summer, Coneflowers are a mainstay in today's garden. Coneflowers, also known as Echinacea, attract butterflies like no other plant. Wonderful color and beauty all in one perennial plant!

Hardy in zones 4-9 Size No. 1 Height 18-24"
Spacing 12-18" Full or Part Sun Cut Flower
Deer Resistant Attracts Butterflies



S35

50 GOOD LUCK PLANT

\$12

Also known as the Shamrock Bulb or the Oxalis Iron Cross, their leaves are loved as much as the flowers themselves. Used in beds, borders, rock gardens, or containers, they certainly are a conversation piece in your garden due to their vibrant flowers and amazing foliage markings.

Hardy in zones 8-10 Bulb Size 5/6 cm Height 8-14"
Spacing 4" Full Sun Part Sun



S36

10 RANUNCULUS MIX \$10

A beautiful display of bright shades with a double bloom. Persian Buttercups will give you a wide array of many blooms in yellow, gold, red, pink, white, and orange. Ideal for borders and cuttings. An absolute rainbow of flowers!

Hardy in zones 7-9 Bulb size 4/5cm
Height 12-18" Spacing 2-3" Full/Part Sun
Cut Flowers Deer Resistant

*The Colors of Spring
& Summer...*

A young girl with blonde hair, wearing a purple ruffled dress and a blue headband with a Hello Kitty character, is smiling and holding a large, white lily flower. The background is filled with more of these large white lilies and green foliage.

S37

3 GIANT TREE LILIES

\$16

We're almost lost for words when trying to describe the 'Pretty Woman' giant tree lily. Gorgeous, strong, tall and spectacular are only a few of the words that come to mind.

Large 8" wide fragrant blooms grace the top of this giant beauty that grows 3-4 feet the first year and up to an amazing 6 to 8 feet when the plant is fully mature! With 20 to 30 blooms on each plant by year three, this will certainly be one of the most unique features of your garden.

Even with its incredible height, Pretty Woman won't need to be staked as the beautiful stalks and rich foliage are sturdy enough to support these giant lilies. Remember to take the eventual size into account when you're deciding where to plant.

Hardy in zones 4-9 Size 14/16 cm Height 36-96" Spacing 10-18" Full Sun Part Sun Cut Flower Fragrant



3 LILY OF THE VALLEY

\$14

These enchanting, intensely fragrant, late spring bloomers make a fine ground cover where they get shade or part shade. They are exquisite under spring-flowering trees or as an under-planting for late tulips.

Hardy in zones 2-8 Size No. III Height 4-8"
Spacing 6-8" Part Sun or Shade Cut Flowers
Fragrant Deer Resistant



S39

40 HARLEQUIN FLOWERS

\$12

Cheerful Harlequin Flowers (aka Sparaxis), produce star-shaped flowers in a rainbow of bright colors. Long lasting as cut flower, you'll want plenty of these in your cutting garden. Extremely drought tolerant, these beauties will brighten up any location.

Hardy in zones 7-9 Bulb size 5cm+ Height 10-12"
Spacing 2-3" Full Sun Cut Flower Deer Resistant



S40

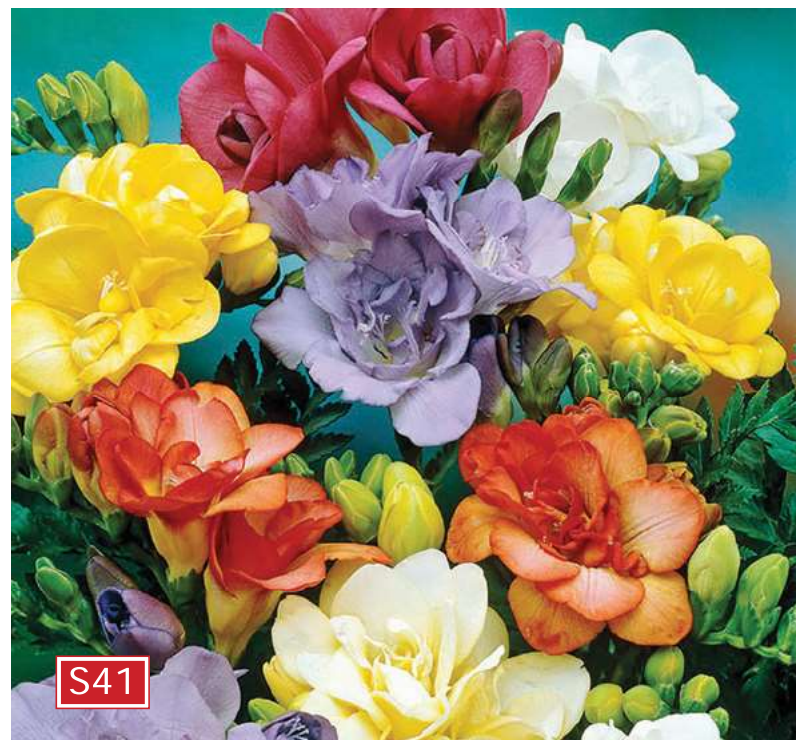
4 ASIATIC LILIES MIXED

\$12

This mix of Asiatic Lily blooms will be sure to delight your mid-summer garden. These flowers are very attractive when planted in large groups and provide a sweet fragrance for the gardener. A beautiful mix of bright colors and multi-blooms.

Hardy in zones 4-9 Bulb size 12-14cm Height 36-42"
Spacing 6-8" Full/Part Sun Cut Flowers Fragrant

Everlasting Garden Color...



S41

20 DOUBLE FREESIA

\$12

A favorite in Holland, the fragrant flowers of Freesia are dainty in bright red, yellow, pink, white, and mauve. They make a splendid cut flower with a surprisingly fruity aroma. A very affordable way to add an abundance of color to your garden.

Hardy in zones 8-9 Bulb size 5/6cm Height 15-24"
Spacing 3-5" Full or Part Sun Cut Flowers Deer Resistant Fragrant



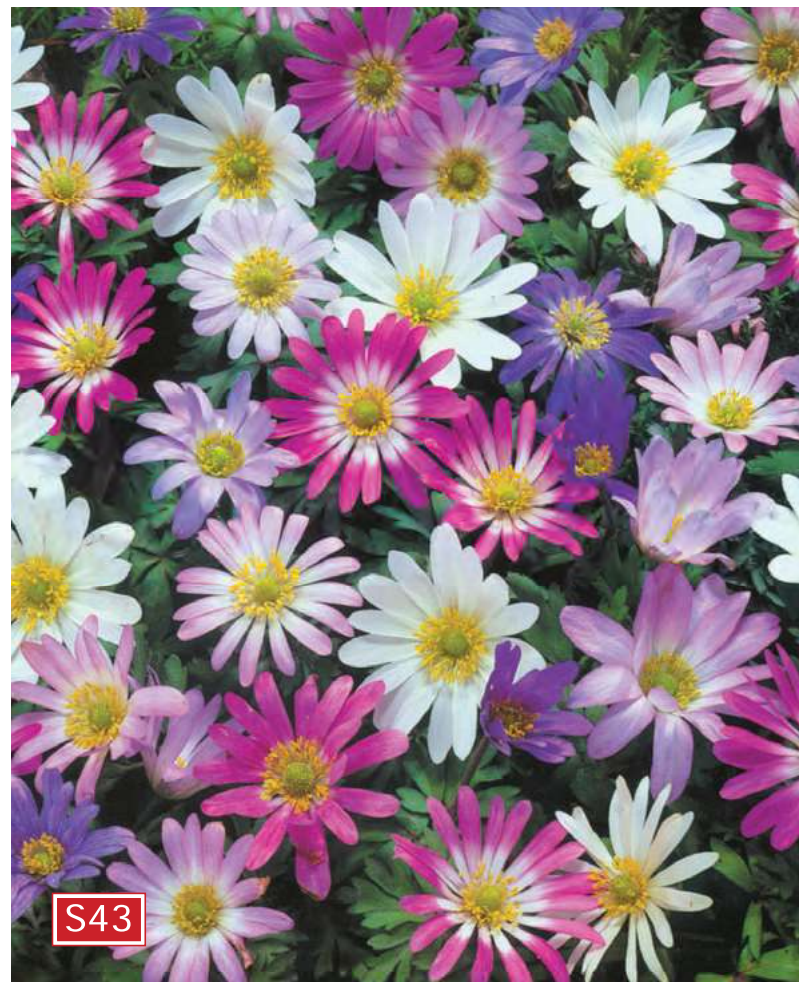
S42

25 MIXED GLADIOLUS

\$18

Large flowers and bright colors would certainly make this beautiful mix our first choice for any garden or bouquet. These stunning plants grow on sturdy stems that fill with countless blossoms. Glads are always a welcomed fresh-cut gift for neighbors and friends.

Hardy in zones 8-10 Bulb size 10/12cm Height 36-48"
Spacing 5-6" Full Sun Cut Flowers Deer Resistant



15 ANEMONE BLANDA MIX \$10

Hardy, daisy like flowers that will create a colorful carpet of blue, white and pink. This mix will start to bloom in early spring and makes an excellent border along any flower bed. They multiply every year creating a bigger display.

Hardy in zones 5-8 Bulb size 4/5cm Height 4-8"
Spacing 2" Full/Part Sun Cut Flower Deer Resistant



8 PEACOCK ORCHIDS \$6

Known by many names including the Fragrant Gladiolus, this marvelous plant produces fragrant, purple-throated, orchid like flowers.

Hardy in zones 7-10 Bulb size 4/5cm Height 10-18"
Spacing 3-5" Full Sun Cut Flower Fragrant Deer Resistant

Hardiness Zones: We'd like to clarify any confusion you may have concerning Hardiness zones. Hardy means they should return next year in the zones listed without having to do anything to them. While some items such as Gladiolus are indicated with higher hardiness zones (7-9), these items could also be planted in colder zones, but would need to be dug up in the fall and stored indoors for the winter. So, all items in this catalog will grow virtually anywhere in North America, but they will only return in the zones listed.

Here's what our customers are saying...

"We love our annual Flower Power Fundraiser. It is looked forward to at the beginning of each school year. The flowers themselves are BEAUTIFUL! The blooms are just breathtaking in the first year, and improve each coming season. We have many repeat customers that are happy to help support our school by purchasing your bulbs! We anticipate offering this fundraiser for many years to come."

— Krissy in Allen Park, MI

You are the best. I love working with Flower Power. You always make it easy and your products are awesome. I have several in my flower beds and they are the best. I know they will be the first back each year and with the biggest blooms. I would encourage anyone to use Flower Power as a fundraiser in the Fall and Spring. We have been able to go on several field trips using the money we earned through Flower Power. It is by far the best fundraiser we do.

— Rose in Lebanon, OR

I am happy to share that I have received very exciting feedback from the "greenest" of gardeners that the bulbs from our fundraisers have all come up, and that they are looking to place repeat orders in Fall, including me (this will be my third order in three years)!

— Pam from Stillwater, MN